



Spring TERM - NEWSLETTER - Issue 08 17th January 2025

Supporting one another in learning and life.

## *Head teacher's blog...*

Dear parents and carers,

Welcome to the first newsletter of 2025! I hope you all had a lovely Christmas and New Year.

We have had a busy few weeks with the children settling back into our school routines quickly and sensibly. Both classes have started to look at their new units of learning and we have all been impressed by the enthusiasm that is permeating throughout the school.

Please look at the following pages to find out about some of the things that the children have been doing.

Although this is not a very long one, we are looking forward to a fun and exciting half term...

If you have any questions or concerns please do not hesitate to contact the school office.

With many thanks for your ongoing support and very best wishes,

Caroline Jarrett





	Monday	Tuesday	Wednesday	Thursday	Friday
Wraparound	15.15 – 16.15 <b>£3.00</b> <b>Snack provided</b> Pick up from top gate	15.15 – 16.15 <b>£3.00</b> <b>Snack provided</b> Pick up from top gate	15.15 – 16.15 <b>£3.00</b> <b>Snack provided</b> Pick up from top gate	15.15 – 16.15 <b>£3.00</b> <b>Snack provided</b> Pick up from top gate	15.15 – 16.15 <b>£3.00</b> <b>Snack provided</b> Pick up from top gate
Additional Clubs (currently)	15.15 – 16.00	15.15 – 16.00	15.15 – 16.00	15.15 – 16.15 <b>No charge</b> <b>LEGO CLUB</b> <b>(no snack)</b> Pick up from top gate	

### Attendance

Our Attendance This week;

Carne Class -92.43%

Kiberick Class - 98%

TOTAL - 95.22%





## DIARY DATES...

2024-25 Inset days - 25/11/24, 06/01/25, 07/01/25,  
23/07/25

- FAMILY WORSHIP EVERY OTHER FRIDAY 14:45
  - PE Mondays and Tuesdays
  - Wild Tribe Wednesdays
  - Wrap around daily (payable on ParentPay)
  - Tuck available on Fridays, this is a flat rate cost of 50p
- 22/01/25 - Cross Country at the Roseland, teams informed  
24/01/24 - Open the book at family worship

### **Reading books and reading records**

Thank you to all parents who have heard their children read regularly and signed their reading records. Your child will need their reading books and reading records in school each day and please remember to sign their reading records every time they read at home to ensure they reach their targets.

### **Drinks bottles in school**

Your child will need a named water bottle in school each day please. These could be left in school if this is more convenient.

### **Morning snacks in school**

Please ensure children bring in one healthy item for their morning snack. This could be a flapjack, piece of fruit, vegetables or crackers with cheese. Please avoid sugary snacks as these do not help concentration levels.



# Carne's recent learning...



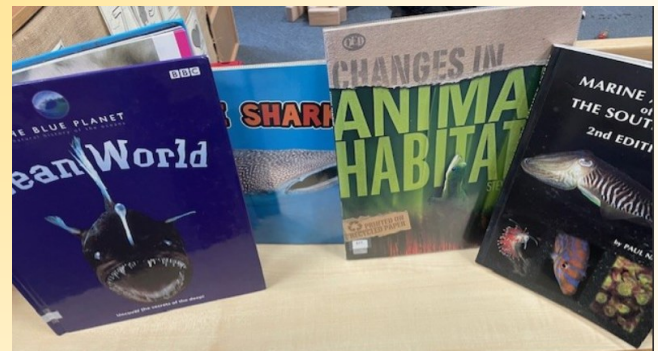
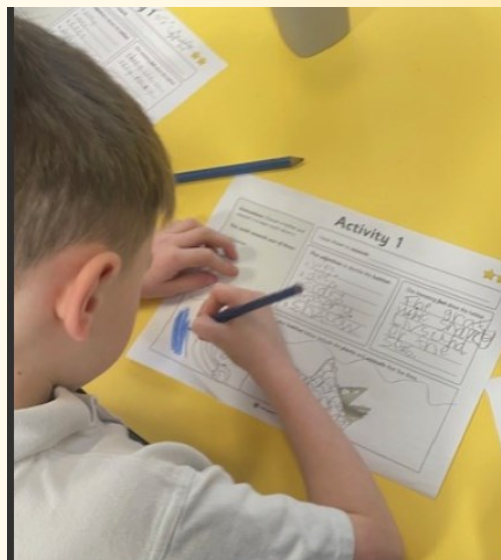
Its been a busy time rescuing and caring for animals in the animals sanctuary and hospital



# Carne's recent learning...



In KS1 we have been researching habitat. We took a deep dive into books and found out lots about the ocean.



# Carne's recent learning...

Our writing in English has been all about describing the character Percy from the Story One Snowy Night. We also re wrote the beginning of the story in our own words.

WALT: describe a character in a story.


Key vocabulary:

Adjectives

Capital letters C

Full stops

Finger spaces



peicee is a park  
 KEEPER. He is nice.  
 He is kind to all the  
 animals.  
 He is a nice person.  
 He is a good person.

WALT: describe a character in a story.


Key vocabulary:

Adjectives

Capital letters C

Full stops

Finger spaces



pursi is a park keeper.  
 He is kind to the animals.  
 He loves the animals.  
 He is not scary. A animal  
 He is not scary. A animal  
 animals. He is very  
 kind to all of the  
 animals. He has a  
 very nice smile. He  
 has as much kind  
 words as much kind  
 He is full of animals.

WALT: describe a character in a story.


Key vocabulary:

Adjectives

Capital letters C

Full stops

Finger spaces




percy is a park keeper.  
 He is kind because he lets the  
 animals to when they cold.  
 He is brave. He has a round face.  
 He is happy.

Adjectives

Capital letters C

Full stops

Finger spaces



percy is a park keeper. He is kind  
 because he shares his lunch with  
 the animals. He is a loving  
 person. He is a caring person.

WALT: describe a character in a story.


Key vocabulary:

Adjectives

Capital letters C

Full stops

Finger spaces



Percy is a park keeper.  
 He is loving because he lets the  
 animals to when they cold.  
 He is brave because he  
 it is not a monster. It  
 is just a mouse.



# Carne's recent learning...

EYFS and KS1 fire Rangers starting their training with learning about the fire circle and how to kneel and sit safely when working with fires. Some of the children named the special kneeling position "The Fortnight Squat".





# Learning with Kiberick...

We began with a focus on Science, looking at 'Evolution and Inheritance'. We have considered how animals and humans have evolved over time and adapted to our environments and habitats. One aspect of this was a look at fossils and how they are formed and we created our own fossil skeletons...







# Learning with Kiberick...

Our new History Unit is a look at 'The Stone Age to the Iron Age'. We began by recording what we already know about this topic and what we want to find out, before starting some research in our new library books.





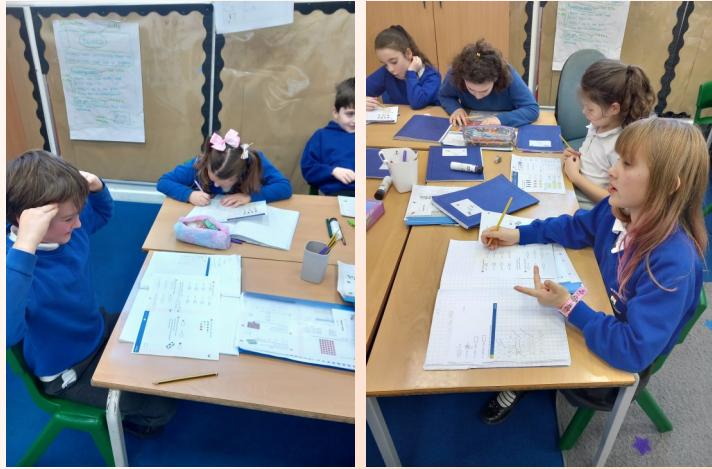
# Learning with Kiberick...

Our Wild Tribe foci for this half term are 'The music of our natural environment' (Y3 & 4) and 'Recreating clay bronze age pots' (Y5 & 6)...





# Learning with Kiberick...



Maths Y3 & 4 – Working hard on times tables, while Y5 & 6 calculate volume of cuboids.

Kiberick at play....



In RE, Kiberick have been looking at the differing viewpoints of Christianity and Science on 'Creation'.







# Wassail!

Saturday 18th January 2025  
4pm - 8pm

Bless, Protect & Celebrate!

Kehelland Trust Orchards TR14 ODE

Music, Dancing, Cider,  
Food & More

\*sliding scale for entry from £8/£4 adult. Child. No booking required just come along ready to eat, drink, dance & be merry. Dress for the weather!





# art - k

## TRURO

TASTER  
sessions  
available

Classes with 1:1 Tuition

### Wednesday

Home Education Class: 1:30 PM - 3:00 PM

Afterschool Class: 4:30 PM - 5:45 PM

Adult Class: 6:30 PM - 7:45 PM

### Thursday

Home Education Class: 10:30 AM - 12:00AM

Adult Class: 1:00 PM - 3:00 PM

Afterschool Class: 4:30 PM - 5:45 PM

### Saturday Kids Classes

9:00 AM - 10:15 AM

11:15 AM - 12:30 PM

1:45 PM - 3:00 PM

- Provides a safe artistic space where children aged 6-16 have time to do long-term projects.
- Uses professional materials and delivers an in-depth art education
- Builds children's confidence and self-esteem.
- Advises students studying GCSE how to build-up their sketchbook.

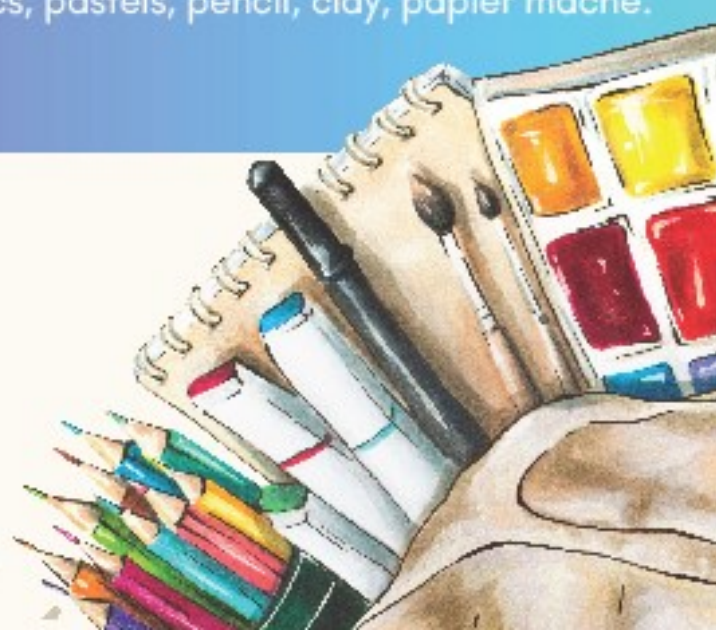
Mediums explored include: watercolours, acrylics, pastels, pencil, clay, papier maché.  
All materials are provided

Book a taster: [www.art-k.co.uk](http://www.art-k.co.uk)

Contact: [sara@art-k.co.uk](mailto:sara@art-k.co.uk)

Phone: 07852674316

Studio: Barras Moor Farm,  
Perranarworthal, Truro, Cornwall,  
TR37PE





## MENTAL HEALTH SUPPORT TEAM - MHST



Parents and Carers -  
please join us at our  
1hr online  
Resilience Workshop

Monday 20th January - 9.30am & 4pm  
Tuesday 21st January - 11am & 2pm  
Wednesday 22nd January - 11.30am &  
4pm  
Thursday 23rd January - 9.30am & 1.30pm



This workshop aims to talk about the  
meaning of resilience, explore  
building resilience and look at how  
and when a young person should ask  
for help.

To book a place please complete  
the online form **HERE**  
[https://forms.office.com/e/TE2U  
mBZrHK](https://forms.office.com/e/TE2UmBZrHK) or scan the QR code



This workshop is open to parents/carers of  
primary aged children enrolled in Reception  
to Year 6 in any school in Cornwall



# MENTAL HEALTH SUPPORT TEAM - MHST



Parents and Carers -  
please join us at our  
1hr online  
Behaviour Workshop

Monday 27th January - 9.30am & 2pm  
Tuesday 28th January - 11.30 am & 4pm  
Wednesday 29th January - 9.30am & 1.30pm  
Thursday 30th January - 11.00am & 4pm

This workshop provides parents with  
practical strategies to foster positive  
behaviour and communication at  
home.

To book a place please complete  
the online form **HERE**  
[https://forms.office.com/e/1Pw  
GDXSQ40](https://forms.office.com/e/1PwGDXSQ40) or scan the QR code



This workshop is open to parents/carers of  
primary aged children enrolled in Reception  
to Year 6 in any school in Cornwall



# MENTAL HEALTH SUPPORT TEAM - MHST



Parents and Carers -  
please join us at our  
1hr online  
Sleep Workshop

Monday 3rd February - 11am & 4pm  
Tuesday 4th February - 9.30am & 2pm  
Wednesday 5th February - 9.30am &  
1.30pm  
Thursday 6th February - 11am &  
1.30pm

This workshop aims to provide  
psychoeducation on sleep hygiene  
and sleep routines. Also includes  
practical strategies for helping  
children

To book a place please complete  
the online form [HERE](https://forms.office.com/e/7ac7qHLPhc)  
[https://forms.office.com/e/7ac7q](https://forms.office.com/e/7ac7qHLPhc)  
[HLPhc](https://forms.office.com/e/7ac7qHLPhc) or scan the QR code



This workshop is open to parents/carers of  
primary aged children enrolled in Reception  
to Year 6 in any school in Cornwall



# MONDAYS AT THE ROSELAND CENTRE



Playmake Theatre



## Moo Music

Sensory music and movement

Babies to wobbly walkers: 12.45pm-1.45pm

Walking onwards: 2pm- 3pm

£7.50 a session

## Playmake Theatre

Playmake Theatre



Drama club

for 8 to 12 years old

4.15pm to 5.30pm £35 for 5 weeks

Drama club, games, performance skills and make our own show

to book go to [www.bookwhen/playmaketheatre](http://www.bookwhen/playmaketheatre)





**A great opportunity for our school, with a little bit of help from you..**  
**Parentkind** – the charity that supports school PTAs - have teamed up with Asda, who are making millions of pounds available to donate to primary schools across the UK through their 'Cashpot for Schools' initiative – all you have to do is, opt in through the Asda Rewards app, choose our primary school and shop and scan in store or shop online at Asda.com, between 2nd September and 30th November 2024

Asda will donate 0.5% of the value of your shop to our Primary school. Also, every time somebody opts in, Asda will give an additional £1 to the school Cashpot. Plus, it doesn't stop there – Asda are also giving £50 to every school to get them started.

# INTRODUCING CASHPOT FOR SCHOOLS

Download and opt-in with Asda Rewards  
and we will donate **££s** to schools.

**CASHPOT  
FOR  
SCHOOLS**



With  
**Parentkind**

## HERE'S HOW:

- 1** Download the Asda Rewards app and opt-in to Cashpot for Schools.
- 2** Choose your primary school
- 3** Shop in-store across Asda & George, and scan your Asda Rewards app at the checkout.
- 4** Shopping online? Simply log in to Asda.com using the same details as your Asda Rewards account.
- 5** We'll do the rest! We donate ££s to your chosen school every time you shop, so they can spend it on exactly what they need.



Selected stores. Minimum spend £2+. Exclusions apply including Asda Express & George.com, subject to availability. UK 16+. App & Opt in required. 0.5% of the value of a customer's eligible shop is donated. Publicly funded primary schools, must register with Parentkind charity 1072633. Full T&Cs at [asda.com/cashpotforschools](https://asda.com/cashpotforschools). Rewards T&Cs at [asda.com/rewards/terms](https://asda.com/rewards/terms). Ends 30.11.24



# ONLINE SUPPORT HUB

youngpeoplecornwall.org  
Weekdays 3:30-5:30pm

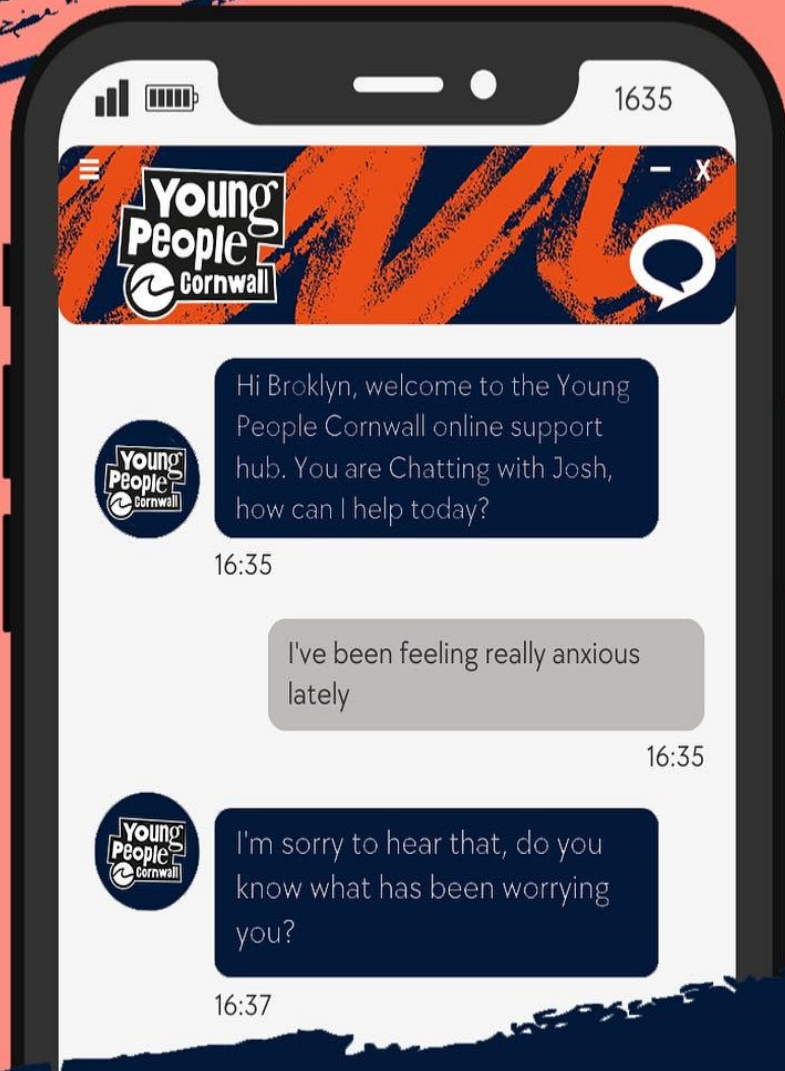
LOOK OUT FOR THESE ICONS ON  
OUR WEBSITE



MEANS WE'RE ONLINE AND  
AVAILABLE TO CHAT



MEANS WE'RE OFFLINE BUT  
YOU CAN LEAVE US A  
MESSAGE



**A SAFE SPACE FOR YOUNG PEOPLE WHO ARE FEELING DOWN AND/OR  
STRUGGLING WITH THEIR EMOTIONS**

- OPEN ACCESS DROP IN SESSIONS FOR AGES 11 TO 25
- TRAINED YOUTH AND MENTAL HEALTH WORKERS
- ADVICE AND GUIDANCE
- SUPPORT TO ACCESS OTHER SERVICES
- ONLINE SUPPORT HUB WEEKDAYS 3:30-5:30PM

CONTACT: 01872 222447 | 07741198551  
TERRIE.PERKINS@YPC.ORG.UK



# DROP-IN SUPPORT HUB

## HUB TIMETABLE

AREA	DAY/TIME	ADDRESS
Penzance	Mondays 3:30-5:30pm	Lescudjack Centre, Penzance, TR18 3PE
Helston	Thursdays 4-6pm	6 Meneage St, Helston, TR13 8AB
Redruth	Tuesdays 3:30-5:30pm	Hideaway 77, Redruth, TR15 2BL
Truro	Wednesdays 3:30-5:30pm Fridays 3:30-5:30pm	Zeb's, The Leats, TR1 3AG
St Austell	Mondays 3:30-5:30pm Thursdays 3:30-5:30pm	The House, St Austell, PL25 4DB
Newquay	Wednesdays 3:30-5:30pm	Newquay, Youth Centre, TR7 2RG
Liskeard	Wednesdays 3:30-5:30pm	Liskerrett Centre, Liskeard, PL14 4AP
Online	Weekdays 3:30-5:30pm	<a href="http://youngpeoplecornwall.org">youngpeoplecornwall.org</a>

A SAFE SPACE FOR YOUNG PEOPLE WHO ARE FEELING DOWN AND/OR STRUGGLING WITH THEIR EMOTIONS

- OPEN ACCESS DROP IN SESSIONS FOR AGES 11 TO 25
- TRAINED YOUTH AND MENTAL HEALTH WORKERS
- ADVICE AND GUIDANCE
- SUPPORT TO ACCESS OTHER SERVICES
- ONLINE SUPPORT HUB WEEKDAYS 3:30-5:30PM

CONTACT: 01872 222447 | 07741198551  
[TERRIE.PERKINS@YPC.ORG.UK](mailto:TERRIE.PERKINS@YPC.ORG.UK)





Funded by  
UK Government



ChatHealth  
Cornwall and the Isles of Scilly

# ChatHealth Parent Line 5-19

School Nursing messaging service for parents and carers of children and young people 5-19 years in Cornwall and Isles of Scilly

TEXT



# 07312 263 499



Get  
confidential  
health and  
wellbeing advice  
and support



Together  
for Families



Council of the  
ISLES OF SCILLY

[www.cornwall.gov.uk/chathealth](http://www.cornwall.gov.uk/chathealth)

To read our full privacy notice please visit [www.cornwall.gov.uk/tffprivacynotice](http://www.cornwall.gov.uk/tffprivacynotice)

We might inform someone if we were concerned about your safety but we would usually speak to you first. Messages are stored and can be seen by other health care staff who follow the same confidentiality rules. We aim to reply within 48 hours and you should get an immediate reply to confirm we have received your text. **Texts will not be seen outside working hours.** If you need help before you hear back from us contact your GP, nearest walk-in centre or dial 111. Our text number does not receive voice calls or MMS picture messages. We support messaging from UK mobile numbers only (not including messages from landlines, international numbers and some mobile apps). To prevent Chat Health from sending messages to you, text STOP to our number. Messages charged at your usual rates.



# Preloved Uniform

Preloved and affordable Veryan School uniform now available, please check it out. We will continue to collect items that are no longer required to make them available to others that could use them, I can collect these in the office. Any money made from the sales will go towards projects or trips for the children.

We also have a selection of uniform available in school, please contact the office if there is anything you are short on.



PRE-LOVED  
SCHOOL UNIFORM  
AVAILABLE NOW!

[www.uniformd.co.uk](http://www.uniformd.co.uk)

To order: visit [uniformd.co.uk](http://uniformd.co.uk),  
enter Veryan School in the search bar  
we will contact you to let you know when it is  
available to collect.

Funds raised will go directly to Veryan School

**We are still accepting donations!**  
**Keep them coming!**





# FOOTBALL SATURDAY MORNINGS

## WHEN

**9am-10am Reception Class/Yr1**  
**9am-10:30am Years 2-7**



## WHERE

**Probus School**


## DETAILS

**All abilities welcome**  
**Qualified FA coaches**  
**No need to book**

## BRING

**Football boots AND trainers**  
**Suitable clothing**  
**Shin pads**  
**Drink**

**NO NEED TO BOOK, JUST TURN UP READY TO PLAY!**

 [@probusyouthfootballclub](https://www.facebook.com/probusyouthfootballclub)

## EACH SATURDAY

**In association with Probus  
Youth Football Club**

## AGES

**Reception to Yr 7**

## PRICE

**Reception/Yr1 £4**  
**Yr2- Yr7 £5**

## COACHES

**Steve Flack**  
**Will Ferguson**  
**Other PYFC coaches**

## FUN...

**Outdoor football skills,  
drills and matches with  
experienced coaches**





## Free School Meals

If you think you may be eligible for Free School Meals the criteria and link you will need to follow are below. Not only would your child receive free meals but this enables the school to access additional funding. If you would apply by post please contact the office for a paper application form.

### Free school meals eligibility criteria if you receive benefits

A child is eligible for free school meals if their parent/carer (or the child themselves) receives any of the following benefits:

Universal Credit (provided you have an annual net earned income of no more than £7,400, as assessed by earnings from up to three of your most recent assessment periods).

Income Support (IS)

Job Seekers' Allowance (Income-Based) and equal based Job Seekers Allowance

Income Related Employment and Support Allowance (ESA-IR) and equal based Employment and Support Allowance

Child Tax Credit (CTC) with an annual income of less than £16,190

Working Tax Credit run-on - paid for 4 weeks after you stop qualifying for Working Tax Credit

Guarantee Element of Pension Credit (GPC)

Immigration and Asylum Act 1999 (IAA) Supports

If you are claiming the benefits listed below you are not eligible for free school meals. This is regardless of what other benefits/credits are being claimed.

Working Tax Credit

Contribution-Based Job Seeker's Allowance and/or Contribution-Based Employment and Support Allowance

### Link to Cornwall Council Website for Free School Meals

<https://www.cornwall.gov.uk/schools-and-education/schools-and-colleges/school-meals/apply-for-free-school-meals-and-pupil-premium/>

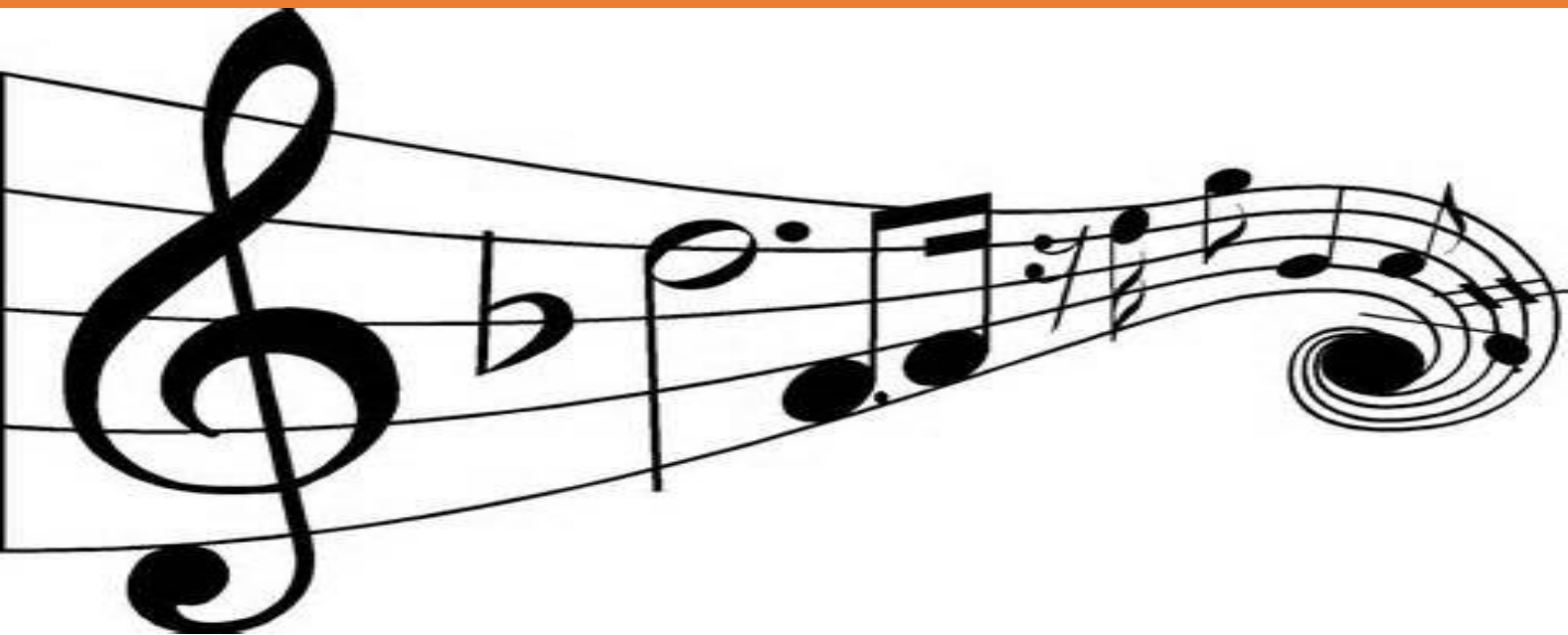


## Cornwall Music Trust...

Cornwall Music Trust's "very experienced guitar and piano specialist - Allan Fouracre" will be taking on new pupils.

If a child is interested in joining this please book through Cornwall Music Trust, <https://cmst.co.uk/>

Those in receipt of Pupil premium are entitled to some free music lessons.



## OUR MISSION IN MUSIC

By enabling students of all generations, backgrounds and communities to enjoy a life including music making and participation, we seek to grow and support the health of a musical community for now and for the future.

### It all started when...

In 2015 Cornwall Council chose to dissolve the county ran music service, Music Cornwall. In reaction to this a large group of music teachers banded together, under the leadership of Gareth Churcher, to create CMST and continue the tradition of music teaching throughout Cornwall. Since that point we have been providing music lessons, ensembles, classroom support and music therapy throughout the county. CMST is the largest charitable organisation delivering music lessons in Cornwall and pride ourselves in providing the best service for young musicians available!